

111 VILLAGE PARKWAY

\$259,000

FBN, INC.

KOOTENAI CREEK VILLAGE



This charming home was featured in the 2010 Bitterroot Tour of Homes

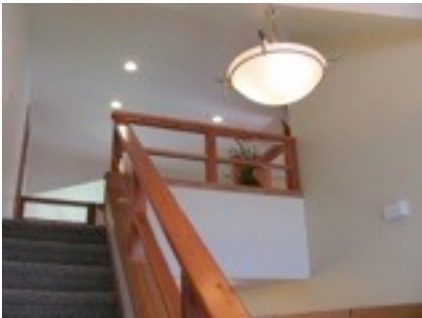
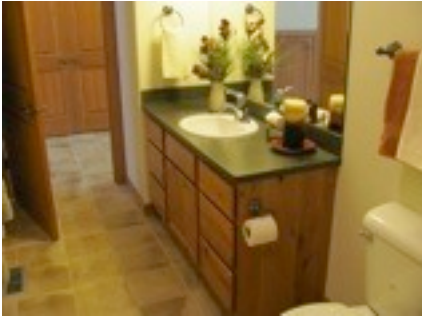
Designed with Easy Living in mind, the "Monterey" features an open floor plan with Energy Star rated finishes.

- 1,731 Sq. Ft.
- 2 Bedrooms + Den
- 3 Bathrooms
- Attached 2 Car Finished Garage
- Handicap Accessible
- Loft Area
- Natural Gas Heating (92% E-Star Furnace)
- E-Star Central Air Conditioning
- Low-E Premium Jeld-Wen Windows
- Hardi-Plank Fiber Cement Siding with LedgeStone Accents
- 8,876 Sq. Ft. Lot
- Fully Landscaped Yard
- Automatic Irrigation/Sprinkler System
- 18 Ft. Cathedral Ceilings in Entry and Living Room
- Del Tempo Ceramic Tile Flooring
- Premium Mohawk Stain Resistant Carpeting
- Minka Brushed Nickel Lighting Fixtures (E-Star)
- 2 Panel Fir Doors Throughout
- Custom Alder Wood Trim-work and Banister
- Master Suite with Spacious Bathroom and Walk-in Closet
- Hand Textured Drywall
- Ample Closet and Storage Space Throughout
- Hand Crafted Knotty Alder Cabinetry with Solid Surface Countertops

Kootenai Creek Village Office
1112 Heritage Drive
Stevensville, MT 59870
406 777-5387

Email: tom@kootenaicreekvillage.com





The Energy Star label is awarded to homes that have been independently verified to be up to 30% more efficient than state energy codes. These savings are based on heating, cooling, hot water use, and are typically achieved through a combination of tight duct systems, upgraded heating and air conditioning systems, Energy Star qualified windows, increased insulation, and high-efficiency water heating equipment.



Second Floor with Bonus Room



Office: 406 777-5387
Email: tom@kootenaicreekvillage.com